



BUFFET LOOKBOOK 2022

EASTERN
TABLETOP

THE HUB



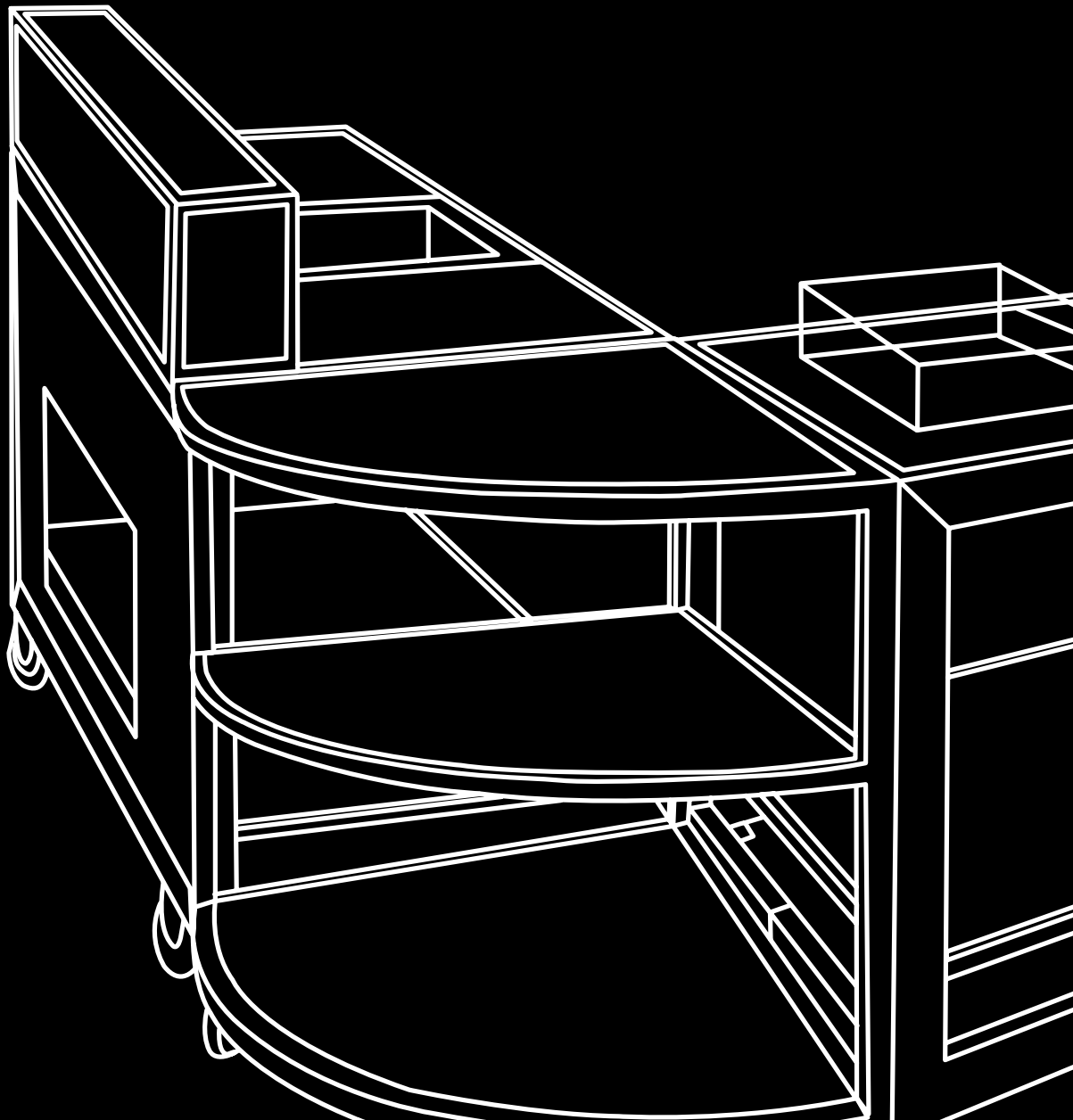


Forward advancement of craftsmanship led to the supremacy of the HUB. When genius design gets coupled with quality you have a true winner.

GET ROLLING.

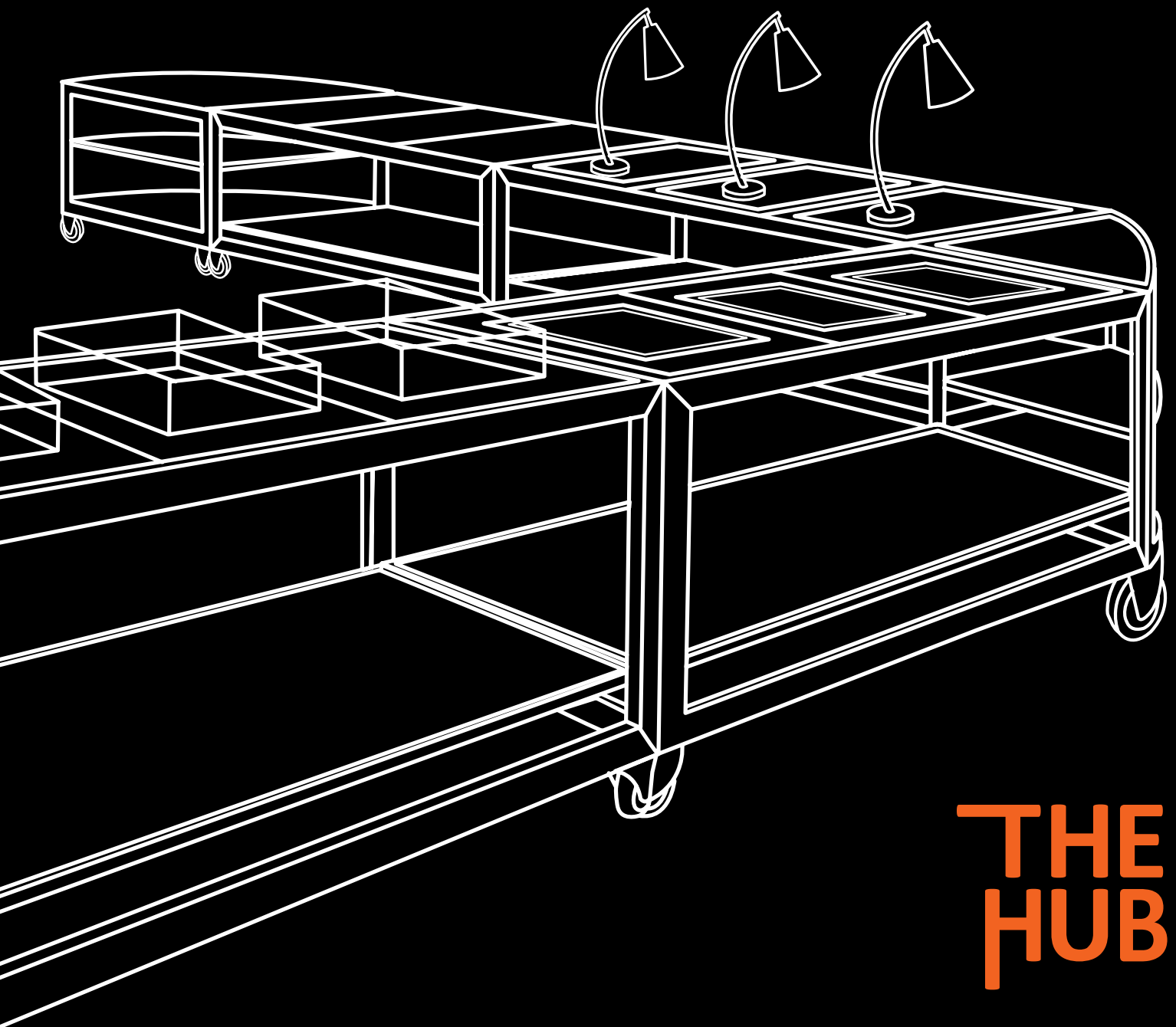
PERFORMANCE.

*A one-time purchase, that lasts a lifetime.
Timeless design and performance on day
one, the same as many years down the
road is called success.*





Watch live video
for this product.



**THE
HUB**

RESOURCEFUL.

*ONE product performs **100 functions** that is genius. The same Hub updates constantly so you are always above the trend and moving forward.*



THE
HUB





THE HUB TABLE PANELS

THE HUB

MODERN
EYE CATCHING
DESIGN

PERFORATED PANELS



LIGHT & AIRY

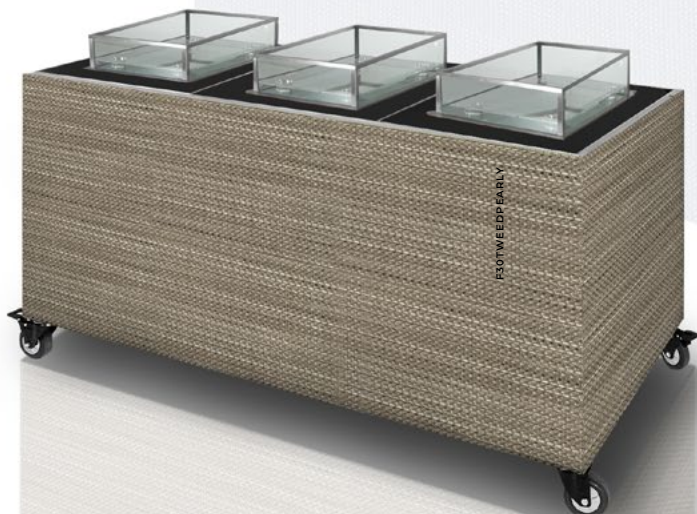
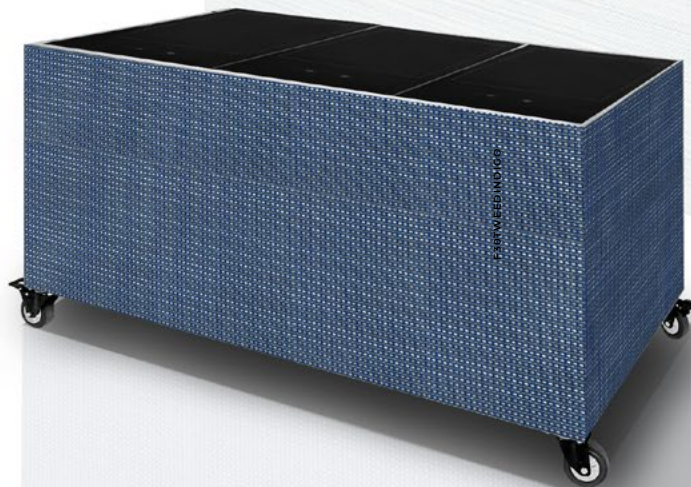
THE HUB TABLE PANELS DECOR COLLECTION

ANTIMICROBIAL VINYL PANELS

WEAVES & COLORS UPDATE THE TIMELESS DESIGN OF THE HUB

To choose from
44 colors and 2
patterns visit
www.EasternTabletop.com

Easily clicks on & off,
providing flexibility
to dress up your
HUB with the color
of your choice.



Watch live video
for this product.

THE HUB TABLE PANELS

THE HUB SCREEN PRINTING



3 Individual
Font Panel Prints
#SP9000

1 Full
Front Panel Prints
#SP9005

3 Individual Font Panels &
2 Side Panel Prints
#SP9010

1 Full Front Panel &
2 Side Panel Prints
#SP9015

All 4 Sides
Total of 8 Panel Prints
#SP9020

All 4 Sides (Front & Back Long Panels)
Total of 4 Panel Prints
#SP9025



BRING YOUR HUB TO LIFE

CUSTOM SCREEN-PRINTING SCREENS THAT EASILY ATTACH AND PEEL OFF YOUR EXISTING PANELS.

WE HAVE A FULL LIBRARY OF STOCK PHOTOS AVAILABLE OR WE CAN CUSTOMIZE IT WITH YOUR IMAGE OR LOGO. TO CHOOSE YOUR CUSTOM PANEL VISIT WWW.EASTERNTABLETOP.COM.



Watch live video
for this product.



COLLAPSIBLE OVERHEAD
CANOPY

HERE WHEN YOU NEED IT -
GONE WHEN YOU DON'T.

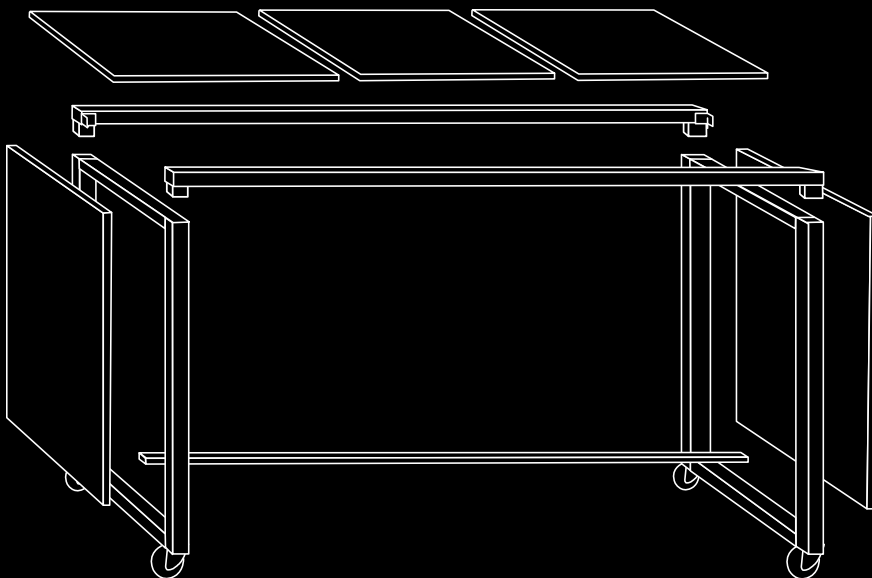
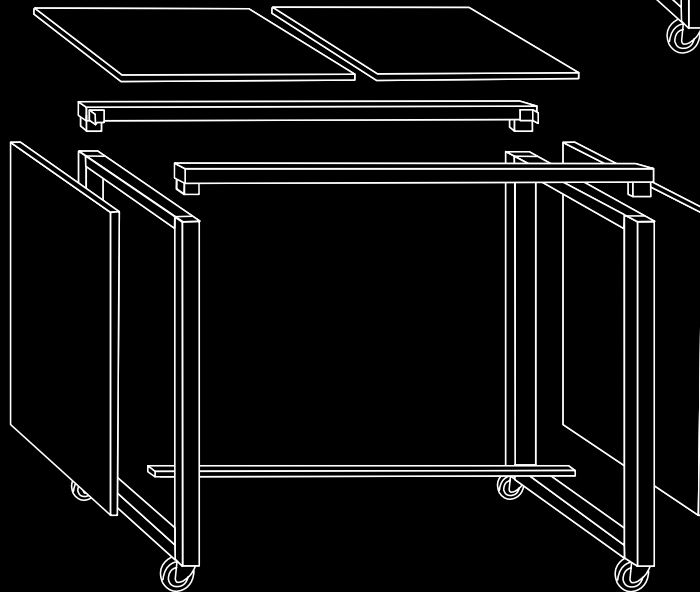
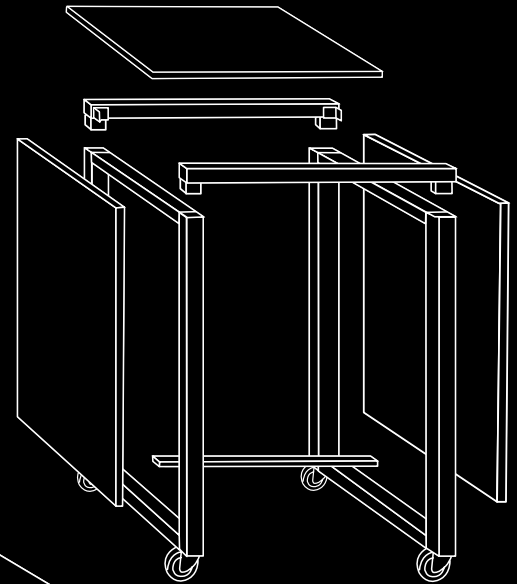
FOLDING BAR

FOLDAWAY BAR IS
PORTABLE & COLLAPSIBLE
WITH OUR FLAT PACK FEATURE.



STRETCH BUFFET

The Freedom of Movement
ushers in the new era of
buffet mobility with flat pack
compact storage solutions.



One set of side frames
can be used for 3 size
table lengths. 1, 2 or 3
tile table length.

THE STRETCH BUFFET

DESIGNED WITH THE EASTERN CONCEPT OF:

NO HARDWARE REQUIRED FOR ASSEMBLY OR DISMANTLING
COMPACT STORAGE SOLUTIONS
FROM 1 TILE, UP TO 3 TILES





Watch live video
for this product.



SHRINK YOUR FOOTPRINT // EXPAND YOUR SPACE

3 SIZES THAT SMOOTHLY INTEGRATE WITH EACH OTHER.

CAPSULES ARE COLLAPSIBLE AND FLAT PACK IN OUR CONVENIENT CARRY CASE.

XYLO 

Items are available in a variety of finishes, brushed or powder color.
Visit www.EasternTableTop.com for full product details.

WINE. DINE. IN STYLE.



Watch live video
for this product.

COCKTAIL TABLES

XYLO 

Items are available in a variety of finishes, brushed or powder color.
Visit www.EasternTableTop.com for full product details.



DISPLAY KIOSK

**THE MOST CLEVER AND UNIQUE ONE-STEP
FOLDING BUFFET KIOSK, THAT IS MULTI-
FUNCTIONAL & ULTRA-LIGHTWEIGHT.**



Watch
for the



ch live video
his product.





THE INFINITY COLLECTION

BUILD, UN-BUILD, REBUILD

When Less is More - 4 minimalistic forms will unleash your imagination and let you create and develop from a single piece to a full fledged systematic buffet.



4 module sizes makes countless creative setups.

Hot and Cold options.

Adapts from action to display.

Choose from 2 popular wood colors.

Stylish acrylic covers available.

5-STAR ROLLTOP FEATURES

- ▶ Heavy Duty Stainless Steel
- ▶ Dome Cover With Break Lock System
- ▶ Drip Free / Condensation Catch
- ▶ Convenient Shelf To Place Gel Sterno
- ▶ Adaptable To Electric Heat

MODEL #3114MB

5-STAR ROLLTOP CHAFERS

XYLO 

Items are available in a variety of finishes, brushed or powder color.
Visit www.EasternTableTop.com for full product details.

CHAFERS THAT
BLEND SEAMLESSLY
WITH YOUR LUXURY
BUFFET

XYLO 

Items are available in a variety of finishes, brushed or powder color.
Visit www.EasternTableTop.com for full product details.

COMPLETE WITH STAND

4-STAR INDUCTION VESSELS

- ▶ 3-Ply Stainless Steel
- ▶ Stainless Steel or Glass Lid Option
- ▶ Cover Stops At Any Angle
- ▶ High Quality Mechanism
- ▶ Drip Free Feature
- ▶ Convenient Shelf To Place Gel Sterno



XYLO 

Items are available in a variety of finishes, brushed or powder color.
Visit www.EasternTableTop.com for full product details.

MINI INDUCTION CHAFER

- ▶ 3 Piece Stainless Steel
- ▶ Hinged Glass Lid
- ▶ Polished or Hammered Vessel
- ▶ Food Pan Included

XYLO 

Items are available in a variety of finishes, brushed or powder color.
Visit www.EasternTableTop.com for full product details.



**CAPTURE YOUR AUDIENCE
THROUGH SIMPLICITY IN
LINES, FORM, SPACE, DETAIL.**

THE MINIMALISTIC STAND DESIGN IS A TRUE WINNER.

ON-SITE ACTION

GRIDDLES



XYLO ■■■

Items are available in a variety of finishes, brushed or powder color.

Visit www.EasternTableTop.com for full product details.

7-STAR JAZZ ROCK SOUP MARMITE

HYDRAULIC HINGE
LOCKS IN AT
180 DEGREES

REMOVABLE
LID FOR EASY
CLEANING

3-PLY
INDUCTION
BOTTOM

SLOWED LETDOWN
MECHANISM LOCKS
IN AT 180 DEGREES

5-STAR CLASSIC SOUP MARMITE

PORCELIN FOOD PAN

HINGED LID
REMOVABLE

STERNO
SHELF

XYLO 

Items are available in a variety of finishes, brushed or powder color.
Visit www.EasternTableTop.com for full product details.

7-STAR VESSEL FEATURES

SLOWED LETDOWN
MECHANISM LOCKS
IN AT 180 DEGREES

HYDRAULIC HINGE
LOCKS IN AT
180 DEGREES

STAINLESS STEEL
OR GLASS LID

MODEL #3995G

REMOVABLE
LID FOR EASY
CLEANING

4-STAR VESSEL FEATURES

HIGH QUALITY
MECHANISM

COVER STOPS
AT ANY ANGLE

STAINLESS STEEL
OR GLASS LID

MODEL #3915

DRIP FREE FEATURE



XYLO 

Items are available in a variety of finishes, brushed or powder color.
Visit www.EasternTableTop.com for full product details.



COPPER
SINGLE SHADE



STAINLESS & COPPER
DOUBLE SHADE



BLACK & BRONZE
SINGLE SHADE



BRONZE
DOUBLE SHADE



BLACK
SINGLE SHADE



STAINLESS & BLACK
DOUBLE SHADE



RED
SINGLE SHADE

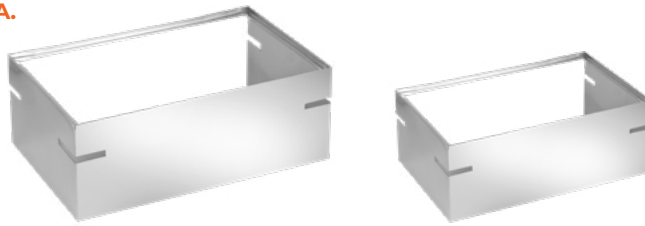


BLACK & RED
DOUBLE SHADE

ALL-IN-ONE BUFFET SYSTEM

CHOOSE EITHER AN 8 QT OR A 4 QT DISPLAY STAND

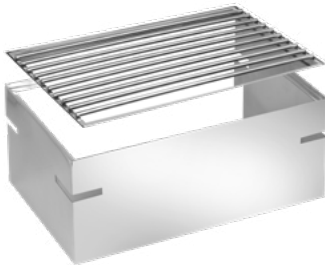
A.



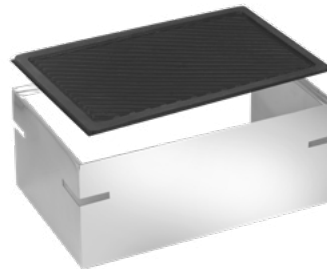
SELECT YOUR FUNCTION

(Bases & Toppers Sold Separately)

B.



C.



D.



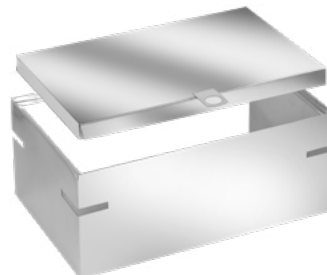
E.



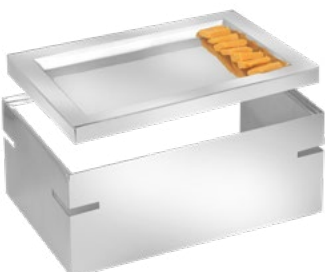
F.



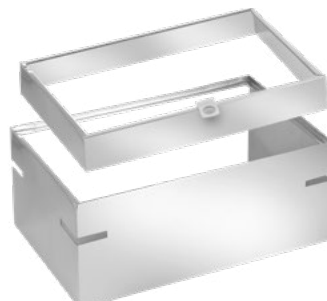
G.



H.



I.





Watch live video
for this product.

ONE STAND ADAPTS TO MANY FUNCTIONAL TOPS

- ▶ Dual Display Risers - Hot or Cold Use
- ▶ Includes Cooking Grate and Sterno
- ▶ Glass or Acrylic Platforms (Sold Separately)

XYLO 

Items are available in a variety of finishes, brushed or powder color.
Visit www.EasternTableTop.com for full product details.

TOTALLY COOL.

XYLO 

Items are available in a variety of finishes, brushed or powder color.
Visit www.EasternTableTop.com for full product details.

XYLO 

Items are available in a variety of finishes, brushed or powder color.
Visit www.EasternTableTop.com for full product details.

STERNO COFFEE URN

FEATURES

PORTABLE
USAGE

TWO SIDED
HANDLES
FOR EASY
TRANSPORT

IDEAL
CHOICE
FOR SERVING
HOT BEVERAGES

REMOVABLE
BODY

STAINLESS
STEEL

HEAT
RESISTANT
EASY FLOW
SPIGOT

DRIP TRAY



SPIGOT



XYLO

Items are available in a variety of finishes, brushed or powder color.
Visit www.EasternTableTop.com for full product details.

VACUUM DOUBLE WALL COFFEE URNS

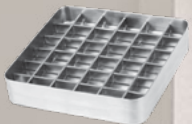
- ▶ Thermally Vacuum Double Wall
- ▶ No Open Flames
- ▶ Tightly Sealed Lid to Preserve Heat
- ▶ Heat Resistant Easy Flow Spigot
- ▶ Removable Body
- ▶ Stainless Steel



START YOUR DAY RIGHT



DRIP TRAY



XYLO 

Items are available in a variety of finishes, brushed or powder color.
Visit www.EasternTableTop.com for full product details.



THE ICONIC SIGNATURE

OF THE ROLLING BUFFETS & MOBILE DISPLAYS



THE CARTWHEEL



Watch live video
for this product.

XYLO 

Items are available in a variety of finishes, brushed or powder color.
Visit www.EasternTableTop.com for full product details.

THE SQUARE CARTWHEEL

IS AN EVERLASTING BEAUTY FEATURING
A TIMELESS & CLEAN DESIGN.

MOBILE BUFFETS



Q-BIK

PERFECT FOR BUFFET SET-UP OR GRAB N' GO

AVAILABLE IN ALL XYLO COLORS



XYLO 

Items are available in a variety of finishes, brushed or powder color.
Visit www.EasternTabletop.com for full product details.

THE PI COLLECTION

The pi shape design has never ending set-up options.
From one slice to the entire pie.

XYLO 

Items are available in a variety of finishes, brushed or powder color.
Visit www.EasternTableTop.com for full product details.

THE GRANDSTAND WALL



Watch live video
for this product.



MAKE A STATEMENT WITH
DOUBLE SIDED DISPLAY.

WIDE & NARROW
SHELVES EASILY HOOK
ON AT ANY HEIGHT.


DISPLAY LARGE IN A SMALL FOOTPRINT

*IT'S MOBILE. IT'S COLLAPSIBLE.
IT'S THE SUPER POWER OF THE MODERN BUFFET.*

MOBILE BUFFETS



Watch live video
for this product.

XYLO 

Items are available in a variety of finishes, brushed or powder color.
Visit www.EasternTableTop.com for full product details.

THE 4 WHEEL DRIVE

1 TABLE - 4 EXTENSIONS

AT EASTERN WE ONLY DRIVE THE BEST.



ROLL. DISPLAY. NEST.

NESTING MOBILE BUFFET



**WHERE SPACE ADAPTS TO YOUR NEEDS,
NOT THE OTHER WAY AROUND.**

XYLO 

Items are available in a variety of finishes, brushed or powder color.
Visit www.EasternTableTop.com for full product details.



**ELEVATE
YOUR BUFFET**

XYLO 

Items are available in a variety of finishes, brushed or powder color.
Visit www.EasternTableTop.com for full product details.

L SHAPED RISERS FOR BACK BARS OR TABLETOP DISPLAYS



Watch live video
for this product.



XYLO

Items are available in a variety of finishes, brushed or powder color.
Visit www.EasternTableTop.com for full product details.

- ▶ SPACE SAVING COLLAPSIBLE DESIGN
- ▶ MIRROR POLISHED STAINLESS STEEL
 - ▶ 3-LEVEL DISPLAY
 - ▶ LASER CUT DESIGN



Watch live video
for this product.

UNLIMITED INTERCONNECTING DESIGNS

UNLIMITED INTERCONNECTING DESIGNS

3 LEVEL DISPLAY RISERS



- ▶ SPACE SAVING COLLAPSIBLE DESIGN
- ▶ MIRROR POLISHED STAINLESS STEEL
 - ▶ 3-LEVEL DISPLAY
 - ▶ LASER CUT DESIGN

XYLO 

Items are available in a variety of finishes, brushed or powder color.
Visit www.EasternTableTop.com for full product details.

SERVE SAFE TO STAY SAFE



XYLO 

Items are available in a variety of finishes, brushed or powder color.

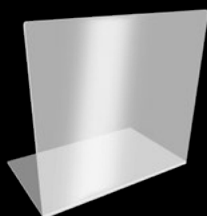
Visit www.EasternTableTop.com for full product details.



SNEEZE GUARDS

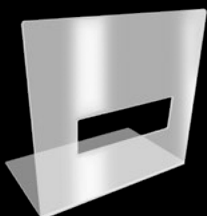
TABLETOP ACRYLIC

G.



#8560AC
#8561AC
#8562AC
#8563AC

H.



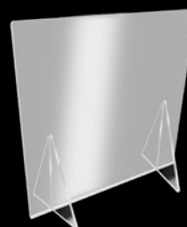
#8570AC
#8571AC
#8572AC
#8573AC

I.



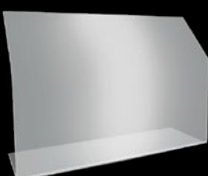
#8540AC
#8541AC
#8542AC
#8543AC
#8543AC

J.



#8565AC
#8566AC
#8567AC
#8568AC

K.



#8585AC
#8586AC
#8587AC
#8588AC

L.



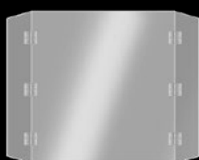
#8580AC
#8581AC
#8582AC
#8583AC

M.



#8591AC
#8592AC
#8593AC

N.



#8530
#8532
#8534

O.



#8597AC

P.



#8550

CUSTOM SIZES AVAILABLE

Visit www.EasternTableTop.com for full product details.

EASTERN

TABLETOP

Corporate Headquarters, Showroom & Warehouse:

Eastern Tabletop Manufacturing Company Inc.

50 Ingham Avenue

Bayonne NJ 07002

Telephone:

1-718-240-9595

Toll Free:

1-888-422-4142

Connect with us on social media!



Visit www.EasternTableTop.com for full product details.



EASTERN

TABLETOP

